

OpenText™ Connectivity Release Notes

Version 15.0

Product Released: 2015-03-18

Release Notes Revised: 2015-03-12

Contents

Contents	2
1 Introduction	5
1.1 Release Notes Revision History	5
2 About OpenText Connectivity	6
3 What is new in this release	7
3.1 Products included in this release	7
3.2 Update to Connectivity EULA	8
3.3 Citrix Certification	8
3.4 Windows® 7 Certification	8
3.5 Windows® 8 Certification	8
3.6 Migration Wizard for Exceed PowerSuite and NFS Client	9
3.7 Refreshed User Interface	9
3.8 Security Enhancements	11
3.8.1 Types of security	11
3.8.2 SSH Update	11
3.8.3 OpenSSL Update	11
3.8.4 HostExplorer Security Enhancements	12
3.8.5 Smart Card Support	13
3.8.6 Additional Security options in Xconfig	13
3.8.7 Detailed Logging	14
3.8.8 New Password Length Allows 256 Characters	14
3.8.9 Disabling insecure connection methods in Xstart	14
3.8.10 New Secure Shell default authentication method: Keyboard Interactive	15
3.9 Security enhancement addressing SSL Poodle bug (CVE-2014-3566)	15
3.9.1 Enabling Client-Side TLS	15
3.10 Exceed Changes	17
3.10.1 Performance Enhancements (2D and 3D)	17
3.10.2 Touch Screen Support	18
3.10.3 New Exceed Menu	18
3.10.4 Full Screen Toolbar	24
3.10.5 UNICODE Support in Directory Services Explorer	26

3.10.6	Detailed Tracing in Exceed.....	26
3.10.7	Ability to Add Comments to a Trace	26
3.10.8	Changes to Installation Features.....	26
3.11	Xconfig.....	27
3.11.1	New Resizing Policies for Single Window Mode.....	27
3.11.2	New Options for Monitor Selection in Xconfig.....	29
3.11.3	New Xconfig User Interface.....	30
3.11.4	Ability to use wildcards to configure host access (in xhost.txt)	31
3.11.5	Ability to specify which network adapter and which IP address to use	31
3.11.6	Other Xconfig features.....	33
3.12	Xstart	34
3.12.1	New Xstart User Interface	34
3.12.2	New Command Line Option to Specify Xconfig in an Xstart file	35
3.13	Xsession	36
3.14	Exceed XDK	37
3.15	Local X Clients.....	38
3.15.1	Local X Clients in OpenText Exceed XDK.....	38
3.15.2	Local X Clients in OpenText Exceed	40
3.16	OpenText Setup Configuration Wizard (Sconfig)	40
3.16.1	Enabling FIPS Only Mode	40
3.17	OpenText HostExplorer and HostExplorer FTP.....	40
3.18	OpenText Web-to-Host and Deployment Wizards.....	41
3.19	Updated Event Monitoring Server	42
4	Packaging and Documentation	43
4.1	Related Documentation	43
5	Supported Environments and Compatibility.....	43
5.1	Supported Operating Systems (OSs).....	43
5.2	Web Browsers	44
5.3	Language Support	44
6	Installation, Upgrade, and Patch Notes	45
6.1	Installation Notes	45
6.2	Upgrade Process for PowerSuite 14 and NFS Client 14	45
7	Fixed Issues in Version 15.0	46
8	Known Issues in Version 15.0.....	48
9	Discontinued and Deprecated Products and Features	51

10 Contact Information	55
-------------------------------------	-----------

1 Introduction

These Release Notes provide an overview of OpenText Connectivity Version 15.0, including new features, delivery information, and supported platforms. OpenText recommends that you read these Release Notes in conjunction with the documentation included with the software package. If any conflicts exist, the Release Notes supersede the other documentation.

These release notes contain information relating to all Connectivity Version 15.0 applications. This information is grouped by function or by product or component. Refer to the sections related to the Open Text product you have purchased.

We also recommend that you check the Open Text Knowledge Center (<https://knowledge.opentext.com/>) for any patches or documentation updates that may have been posted after the initial release of Connectivity Version 15.0.



1.1 Release Notes Revision History




Revision Date	Sections Revised	Description of Revisions
2015-03-12	First release.	New content.

2 About OpenText Connectivity

This section provides an overview of OpenText Connectivity Version 15.0. It is recommended that you read the release notes before installing the Connectivity products.

Connectivity Version 15.0 includes the following products:

Product	Description
 <p>OpenText™ Exceed™</p>	<p>Exceed transforms your computer into a fully functional X Window server. It lets you run and display UNIX applications (X clients) from a Microsoft Windows environment. Exceed allows you to access environments such as UNIX, Linux, VMS, X Window System, and IBM mainframes. Use Exceed on your local computer to:</p> <ul style="list-style-type: none"> ▪ Access powerful applications and information running on networked hosts. ▪ Establish simultaneous connections to different computers running X clients. ▪ Use an X window manager to display a familiar visual interface from your X environment.
<p>OpenText™ Exceed™ 3D</p>	<p>Exceed 3D is an Exceed add-on that adds remote display capabilities for 3D X Window applications. It provides support for the OpenGL-API to ensure that those complex applications are rendered and displayed with the best possible accuracy and performance. It leverages the accelerated capabilities of modern graphics cards, and reduces operational costs by replacing expensive, high-end UNIX workstations with cost-effective Windows PCs.</p>
 <p>OpenText Exceed™ XDK</p>	<p>This X Window System Development Kit for Exceed enables developers to port existing X applications from UNIX or Linux systems to Windows platforms with minimum re-programming. Use of Exceed XDK reduces software development costs and shortens development cycles.</p>

Product	Description
<p>OpenText™ HostExplorer™</p> 	<p>This PC-to-host terminal emulator provides secure connections from a Windows desktop to enterprise hosts, including IBM mainframes, AS/400s, UNIX and Linux systems.</p>
<p>OpenText™ Secure Shell</p> 	<p>This client implementation of the Secure Shell protocol (SSH2) provides additional security for the existing suite of OpenText Connectivity products, and can be used to provide secure SSH tunneling for 3rd party applications.</p> <p> Note: If you are installing or upgrading any Connectivity components that use OpenText Connectivity Secure Shell (also referred to as CSS), ensure that OpenText Connectivity Secure Shell Version 15 is installed.</p>
<p>OpenText™ Connectivity Migration Wizard</p>	<p>This tool enables smooth migration from OpenText™ Exceed PowerSuite 14 or NFS Client 14 to OpenText Connectivity 15.</p>

3 What is new in this release

OpenText Connectivity Version 15.0 includes new features and product updates in the following areas:

3.1 Products included in this release

OpenText Connectivity 15 contains the following products:

- OpenText Exceed 15
- OpenText Exceed 3D 15
- OpenText Exceed XDK 15

- OpenText HostExplorer 15
- OpenText Secure Shell 15
- OpenText Connectivity Migration Wizard 15
- OpenText NFS Client Migration Tool 15

For more details about each product, see *About OpenText Connectivity* on page 6.

The products may be purchased together or individually. The legacy OpenText Exceed PowerSuite is no longer provided as a single installer, but is now a product bundle that includes NFS Solo 14, Exceed 15 and Exceed 3D 15. NFS Client is no longer provided as a single installer, but is now a product bundle that includes NFS Solo 14 and HostExplorer 15.

3.2 Update to Connectivity EULA

A new end user licensing agreement (EULA) has been introduced with this release. When you install Version 15 products you will be asked to accept the new EULA. These terms and conditions can also be accessed at the following URL:

www.opentext.com/agreements.

3.3 Citrix Certification

The following Connectivity 15 products have been certified through the *Citrix Ready* certification program, for use with Citrix XenApp 7.x:

- OpenText Exceed 15
- OpenText HostExplorer 15
- OpenText Secure Shell 15

The *Citrix Ready* designation is awarded to products that have demonstrated compatibility with Citrix cloud solutions, particularly in terms of mobility, networking, virtualization, and platforms.

3.4 Windows® 7 Certification

The following Connectivity 15 products have been certified as compatible with Microsoft® Windows 7:

- OpenText Exceed 15
- OpenText HostExplorer 15
- OpenText Secure Shell 15

3.5 Windows® 8 Certification

The following Connectivity 15 products have been as compatible with Microsoft® Windows 8:

- OpenText Exceed 15

- OpenText HostExplorer 15
- OpenText Secure Shell 15

3.6 Migration Wizard for Exceed PowerSuite and NFS Client

A migration wizard for OpenText Exceed PowerSuite and OpenText NFS Client has been introduced. This wizard enables smooth migration from OpenText Exceed PowerSuite 14.x or NFS Client Version 14.x to OpenText Connectivity 15.0 components, and replaces the Exceed PowerSuite product with the component products.

The migration wizard will perform the following tasks:

- Examine the current machine to determine if OpenText Exceed PowerSuite 14 or NFS Client 14 products are installed
- Back up the existing settings and uninstall the existing product
- Install the relevant OpenText Connectivity 15.0 package, using the settings that were backed up.
- The migration wizard will install each sub-product with *Typical* options. If you have installed any sub-products, the migration wizard will install updates for these individual products.

Note: The migration wizard is provided as an MSI that can perform the product upgrade using Microsoft System Center or other automated tools that support MSI files. The migration wizard and product components installation can be done silently. Component product installers can be modified using MST files (transforms).

3.7 Refreshed User Interface

The following user interface updates have been introduced:

UI change	Details	Connectivity Products
New OpenText Connectivity branding and icons	All the Start menu icons and Metro desktop icons have been re-designed and updated from 8 bit to 32 bit.	All

UI change	Details	Connectivity Products
Complete redesign of the Xconfig, Xstart, Xsession wizards.	<p>The Xconfig, Xstart and Xsession wizards have been re-designed with improved workflows and ease of use. The list of browsable applications in Xstart has also been updated. For details, see the following topics:</p> <ul style="list-style-type: none"> • New Exceed Menu on page 18 • Full Screen Toolbar on page 24 • New Xconfig User Interface on page 30 • New Xstart User Interface on page 34 • Xsession on page 36 	Exceed
Rearrangement of the Exceed context menu	<p>The Exceed context menu may be accessed:</p> <ul style="list-style-type: none"> • from the Full Screen toolbar (see <i>page 24</i>) • from the Exceed taskbar by hovering over the taskbar and right-clicking on the preview pane (see <i>page 18</i>) 	Exceed
Improved Windows 8 experience	<p><i>Metro Desktop</i>—Metro tiles have been used for all top-level Start menu applications. Windows 8.0 uses folder shortcuts in the Start menu.</p>	All
	<p><i>Gestures</i>—Windows 8 gestures have been mapped to X events.</p> <p>For details, see Touch Screen Support on page 18.</p>	Exceed

3.8 Security Enhancements

This section lists the security enhancements that have been introduced.

3.8.1 Types of security

The following security methods are used:

Method	For use in...
SSH connection	OpenText HostExplorer, HostExplorer FTP, Secure Shell Console, Xstart, and Classic FTP
Kerberos authentication	OpenText HostExplorer, HostExplorer FTP, and Xstart
SSL encryption	OpenText HostExplorer, HostExplorer FTP, and Classic FTP

3.8.2 SSH Update

Item	Details
Encryption algorithms for data integrity	<ul style="list-style-type: none"> ▪ AES CTR encryption for SSH connections. Key sizes are 128, 192 and 256 bits.
Message Authentication	<ul style="list-style-type: none"> ▪ Added support for hmac-sha256 and hmac-sha2-512
Key Exchange	<ul style="list-style-type: none"> ▪ Added diffie-hellman-group-exchange-sha256

3.8.3 OpenSSL Update

The following changes were introduced:

- OpenSSL libraries are updated from Version 0.98za to 1.0.1L
 - 67 new cipher suites available for SSL based connections (HostExplorer and HostExplorer FTP).
 - Support for elliptical curve cryptography.
 - Uses the latest FIPS compliant libraries. Note that FIPS Only mode may now be configured from a single location, in OpenText Setup Configuration Wizard.
 - Includes the latest security fixes / patches.

- The OpenSSL implementation now allows FTP to be loaded by HostExplorer and still use FIPS mode. OpenSSL enables OpenText Connectivity products, including HostExplorer, Exceed, Exceed Connection Server, and HostExplorer FTP, to provide Secure Socket Layer (SSL) encryption, authentication, and privacy to network communication over SSH and SFTP. It contains the necessary cryptographic libraries for SSL/TLS, and is provided in the form of two DLLs, libeay32.dll and ssleay32.dll. The workstation is not limited to using the default protocol to start the X Window client on the server. It can use any other startup method, including REXEC, RSH, and RLOGIN.

3.8.4 HostExplorer Security Enhancements

Enhancement	Details
<p>Disable insecure (TELNET) option in HostExplorer profiles</p>	<p>HostExplorer can now be configured to disable insecure communication protocols.</p> <p>To enable this behavior, the following flag must be set in <code>hostex.ini</code>:</p> <pre>[System.Settings] Secure Mode Only=On</pre> <p>When this option is configured, TELNET will no longer be available, for editing or creating HostExplorer profiles. Only Kerberos and SSL/TLS may be used (5250 does not support Kerberos). For VT profiles, in addition to Kerberos and SSL/TLS, SSH will be available.</p> <p>Changes to <code>hostex.ini</code> require you to restart HostExplorer before the new settings will be detected.</p>


Enhancement	Details
Removal of insecure connection type <i>FTP - Username/Password</i> from OpenText HostExplorer FTP	<p>For security reasons, HostExplorer FTP can now be configured to disable unencrypted username and password authentication.</p> <p>To make this change, the following flag must be set in <code>heshell.ini</code>:</p> <pre>[FTP Settings] Secure Mode Only=1</pre> <p>This will result in the following changes:</p> <ul style="list-style-type: none"> • The insecure connection type <i>FTP - Username/Password</i> is removed from connection type list for FTP. • FTP - Username/Password is not accessible from the File menu item in an FTP Windows Explorer session.

3.8.5 Smart Card Support

Secure Shell 15 now supports smart card authentication. Users with PIV (FIPS 201) or other Windows-compatible smart cards can now authenticate using RSA public key authentication to UNIX / Linux servers.

For this public/private key authentication over SSH, the private key is stored in a certificate on the smart card. After selecting the login certificate from the smart card, the user is prompted for the smart card PIN. Once the PIN is entered, the user is logged in to the Linux/Unix machine.

The public key corresponding to the key in the smart card certificate needs to be stored in the `.ssh/authorized_keys` file on the Linux server, or in the location where the server expects to find the public key for public key authentication.

-  **Note:** For extraction of the public key from the certificate, a 3rd party tool is used. After you install the Smart Card driver on a Windows machine, the certificate is extracted from the card and placed into the Windows certificate store.

3.8.6 Additional Security options in Xconfig

Xconfig provides new Security configuration settings. For details see:

- Ability to use wildcards to configure host access (in `xhost.txt`) on page 31
- Ability to specify which network adapter and which IP address to use on page 31

3.8.7 Detailed Logging

Administrators now have access to additional information in the Exceed log. The following information about X applications and their connections is logged:

- Remote port, IP address, socket # connection
- Initial data connection from X applications
- Who closed the connection and error number indicating the reason for closing
- Rejection of an X application request to connect to Exceed

3.8.8 New Password Length Allows 256 Characters

Longer passwords may now be created, for added security and flexibility. The maximum password length has been increased from 48 characters to 256 characters.

3.8.9 Disabling insecure connection methods in Xstart

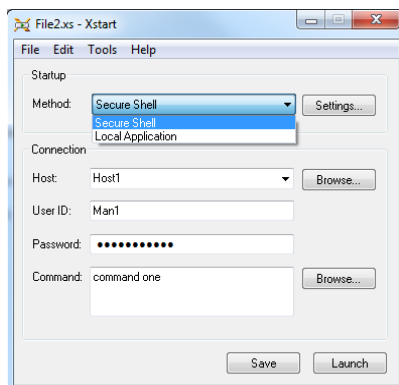
Xstart can now be configured to disable insecure connection methods. This setting prevents users from selecting insecure connection methods from Xstart (REXEC, RSH, RLOGIN, TELNET, DECnet). This setting should only be used if OpenText Secure Shell is installed, as it restricts the available communication protocols to Secure Shell (SSH) and Local Applications. This user interface change may be configured only by administrative users.


To configure the Method menu to show only secure methods:

1. Go to the following location:
`ProgramData\Hummingbird\Connectivity\15.00\Global\Exceed`
2. In `GlobalExceed.ini`, configure the following setting:

```
Always Use SecureShell=TRUE
```

As a result, the *File > Startup > Method* drop-down menu will list fewer options (Secure Shell and Local Applications only).



-  **Note:** Xstart will use only OpenText Secure Shell as a secure connection method. If other, insecure methods were selected previously, the application would connect using SSH and the following warning would be displayed:

```
Only Secure Shell method is enabled
```

3.8.10 New Secure Shell default authentication method: Keyboard Interactive

The Keyboard-Interactive authentication method has been added to default authentication methods for Xstart and OpenText Secure Shell (also referred to as Connectivity Secure Shell or CSS).

The default authentication methods in OpenText Secure Shell are:

- UserName/Password
- KeyboardInteractive

3.9 Security enhancement addressing SSL Poodle bug (CVE-2014-3566)

If Secure Sockets Layer version 3 (SSLv3) protocol is enabled in client-server communication, an attacker can attempt to exploit this vulnerability to intercept and decipher encrypted communications between the client and server. In OpenText Connectivity 15.0, no SSLv3 connections initiated by Secure Terminal, OpenText HostExplorer or HostExplorer FTP are vulnerable to the POODLE bug (CVE-2014-3566).

OpenText recommends that customers discontinue their use of SSLv3 and switch to TLS 1.0 for secure client-server communications.

To ensure that TLS encryption is used in place of SSLv3:

1. Update your client software to the latest version for all affected products.
2. Change any client-side profiles that are currently using SSLv2 or SSLv3 to TLS 1.0 (see **Enabling Client-Side TLS** on page 15).
3. Update any servers running SSLv2 or SSLv3 protocol to use TLS 1.0 exclusively.

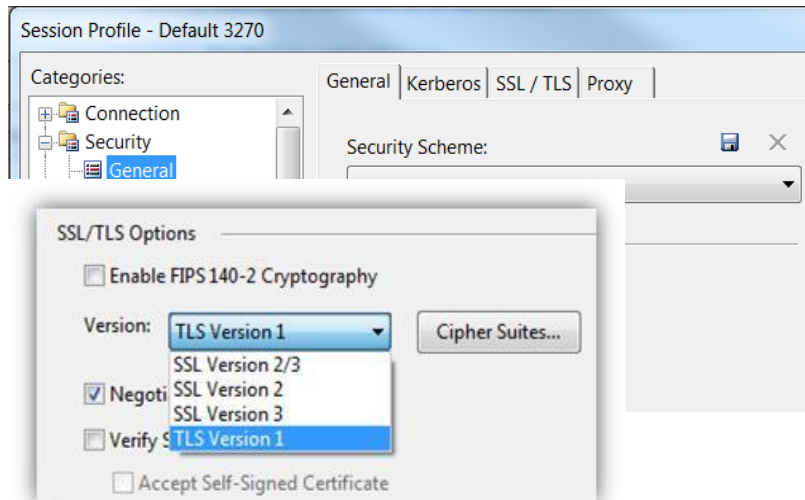
Note: It is important to switch to TLS on the client and server at the same time to preserve compatibility.

3.9.1 Enabling Client-Side TLS

To update OpenText HostExplorer/ Secure Terminal Profiles:

1. Open Connection Central.
2. Right-click a 3270, 5250 or VT profile and then click Properties

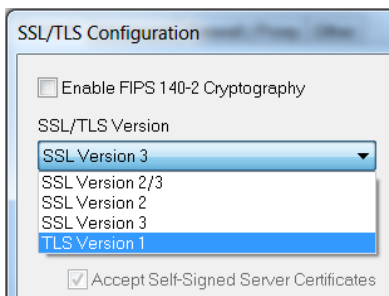
3. In the left pane, expand Security > General, click the SSL/TLS tab. Under Security Options, select SSL/TLS.




4. In the left pane, click SSL/TLS From the Version list, select TLS Version 1.
5. Click **OK** to save the profile.
6. Repeat steps 2 through 5 for each affected profile

To update OpenText HostExplorer FTP Profiles:

1. Open Connection Central or HostExplorer FTP.
2. In the **General** tab, note the connection type. If the connection type is not *FTP – SSL/TLS Explicit* or *FTP – SSL/TLS Implicit*, do not make any changes. If the connection type is *FTP – SSL/TLS Explicit* or *FTP – SSL/TLS Implicit*, click the Authentication Settings button (pencil icon). The SSL/TLS Configuration dialog box is displayed.
3. Under SSL/TLS Version, select TLS Version 1.



4. If you are connecting to an FTP host with this configuration, select the Reuse SSL Session check box, at the bottom of the dialog box.

 **Note:** Some FTP servers may be configured to require data connections to use the same SSL session created for the control connection. This dialog appears in the FTP profile properties, when an SSL connection type is selected, and when the Authentication Settings button (Pencil icon) is clicked. It also appears in the Quick Script Editor, when the user is creating or editing a connection statement for the macro, selecting an SSL or TLS option for Security, and clicking the Configure button next to it.

5. Click **OK** twice to save your settings.
6. Repeat steps 2 through 5 for each affected FTP profile.

3.10 Exceed Changes

This section describes the new features and updates introduced in OpenText Exceed:

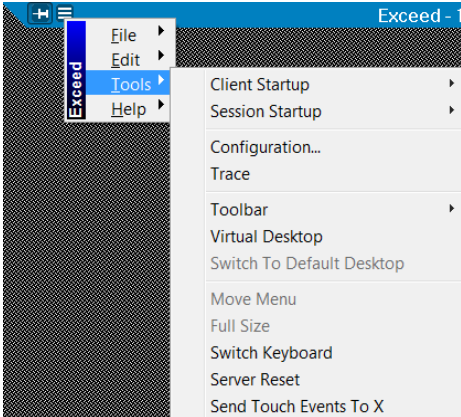
3.10.1 Performance Enhancements (2D and 3D)

Performance type	Details
2D Performance Improvements	<p>Exceed now provides the following performance improvements:</p> <ul style="list-style-type: none"> • Drawing engine has been optimized to provide faster performance of drawing operations. • Modern (anti-aliased) fonts and modern (anti-aliased) lines/trapezoids are faster.
3D performance improvement	<p>Exceed 3D has been optimized to reduce CPU usage for GLX applications. Depending on the application, this may result in increased performance.</p> <p>Performance improvements occur in situations where CPU is the limiting factor (e.g. local X applications or a high speed network).</p>

3.10.2 Touch Screen Support

Exceed now provides multi-touch input dependent on hardware and software support.

To enable or disable support for touch events, use the Exceed menu. Exceed provides the following multi-touch options:

Option in the Exceed menu	Details
<p>Send Touch Events to X—off</p> 	<p>All touch events are based on the Windows behaviour. As a result, Exceed and X applications receive the events as all the other Windows applications. For example, if a Windows gesture is interpreted by Windows 8 as a right-click event, Exceed will convey this as a relevant Exceed event to certain X applications, if applicable.</p> <p>Note: Not all X desktop or X applications are multi-touch aware. If you are using such applications, ensure that the option <i>Send Touch Events to X</i> is deselected, and then let the Windows system convert the touch events to mouse events.</p>
<p>Send Touch Events to X —on</p>	<p>Multi-touch input is recognized when the option <i>Send Touch Events to X</i> is selected from the Exceed menu. Gestures that you may use depend on the hardware and software support (they are X application specific).</p> <p>Windows Touch events, instead of Windows gestures, are sent to X applications through Xinput Extension events. The corresponding X gestures take effect, if they were defined by the X application and/or the X Window Manager.</p>


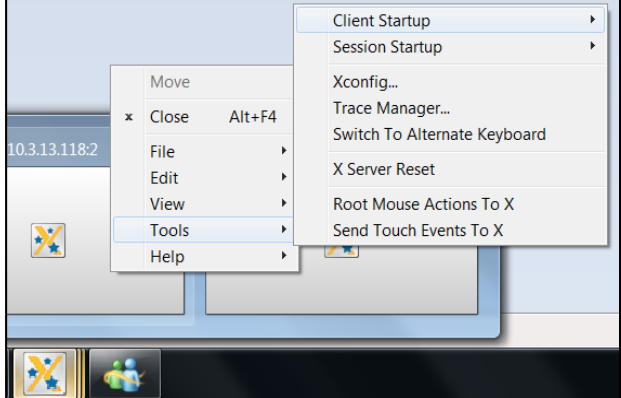
3.10.3 New Exceed Menu

The Exceed menu has been redesigned. Menu sub-options have been rearranged and may be located under a different menu group.

- Note:** Availability of some menu options depends on a particular monitor configuration and whether Single Window Mode or Multiple Window Mode is used. For example, the Switch Monitor option is available if you are using a particular multiple monitor configuration in Single

Window Mode (SWM). This menu option is displayed only when the Exceed menu is launched from the Full Screen toolbar.

To display the new Exceed menu:

From...	Do this...
Full Screen toolbar	<p>Click the <i>Menu</i> icon to expand the Exceed menu, and then select the preferred Exceed menu option. For details, see <i>Full Screen Toolbar</i> on page 24.</p> 
Taskbar	<p>Place the mouse cursor on the Exceed icon in the taskbar, and right-click in a preview pane.</p> 
Exceed application in Single Window Mode	<p>Click in the top left corner of the Exceed application in Single Window Mode.</p>

The following table lists the contents of the new Exceed menu.

Exceed Menu	Submenu	Description of available Exceed menu options
File	Reload database	<i>RGB, Font, Keyboard, Access Control Lists</i> —Reloads a database file after you make changes to it in Xconfig. You can reload these files while Exceed is running.
	XRDB	<i>Load</i> —Loads the xrdb.txt resource file from the User directory and places its contents in the RESOURCE_MANAGER property in the root window. Typically, X clients examine this property for resource preferences. If this property does not exist, most clients look for a local .Xdefaults file, and use its contents as the resource database. <i>Remove</i> —Removes the RESOURCE_MANAGER property from the root window.
	Log File	Displays the proxy log file and allows you to save it to your computer. Use the log and trace files for troubleshooting.
	Print Setup	Opens the Print Setup dialog box, which lets you specify the printer and printing options you want to use.
	Exit	Prompts you to end your X session. Click OK, to do so.
Edit	Copy Rectangle	Copies a region you select. Copying and pasting depends on: <ul style="list-style-type: none"> ▪ Configuration of your X application profile (pertains to X selection and Input settings). ▪ Other factors such as operating system in use, native copy/paste options in the X application you accessed, buffer use, your preferences for copying/pasting and so on.
	Copy All	To Clipboard, To Printer, and To File —Copies all visible areas of an active application window.
	Copy X Selection	To Clipboard, To Printer, and To File—Copies text you select.

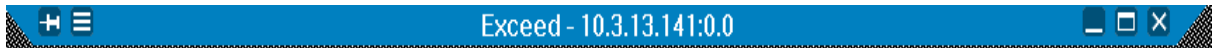
Exceed Menu	Submenu	Description of available Exceed menu options
	Paste To X Selection	From Clipboard and From File—Pastes text, from the local operating system clipboard or a file on your computer, to an X selection.
	Clear X Selection	Deletes the current X selection from the X selection buffer.
View	Toolbar	<p>Allows you to control the behavior of the Exceed toolbar.</p> <p>Show—Displays or hides the toolbar. A check mark beside this command indicates that the toolbar is displayed.</p> <p>Tips—Displays or hides tips about toolbar buttons. A check mark beside this command indicates that the tips are displayed.</p> <p>Always On Top—Keeps the toolbar on top of the client window so that it is visible at all times. A check mark beside this option indicates that this feature is enabled. Not available in Single Window Mode.</p> <p>Auto Hide—Automatically hides the docked Exceed toolbar.</p> <p>Large Buttons—Toggles large or small size toolbar buttons.</p> <p>Customize—Opens the Customize Toolbar dialog box. Use it to customize the Exceed toolbar.</p>
	Switch Monitor item	<p>This option is available in the following context:</p> <ul style="list-style-type: none"> ▪ Single Window Mode is enabled at the Screen page in Xconfig. ▪ Full Screen check box is selected ▪ One monitor, in a multiple monitor environment
	Show icon in Notification Area	Available in Multiple Window Mode
	Show Backdrop	Switches between X Window backdrop and Windows desktop. This option is available in Multiple Window Mode only.

Exceed Menu	Submenu	Description of available Exceed menu options
	Workspaces	This submenu is available for a local window manager, in Multiple Window Mode. Workspaces imitate the Common Desktop Environment (UNIX) and GNOME (Linux). You can arrange X clients in each workspace and enable multiple workspaces.
	Virtual Destop	Toggles the Virtual Desktop window. This window represents an area larger than the physical screen and effectively increases the size of the display workspace.
Tools	Client Startup	<p>New—Opens Xstart, which lets you create X client profiles.</p> <p>Extra 3D Mouse Support—For X clients that use the older Magellan SpaceBall protocol. Note that this must be launched before running any applications that require Magellan support.</p> <p>Hummingbird Window Manager—X Window Manager that provides a graphical interface to start and terminate clients, position and change the windows on your display, and perform other operations related to X window sessions.</p> <p>Kinput2 XIM Server—Input server for X11R6 applications requiring Japanese text input, including Kana-Kanji conversion.</p>
	Session Startup	New—Opens an X session.
	Xconfig	Displays Xconfig, the utility for configuring Exceed settings
	Trace Manager	Displays the Trace Manager dialog, which allows you to capture (in a trace file) any action performed in Exceed.
	Switch To Primary / Alternate Keyboard	Toggles between the primary and alternative keyboards, configured on the Keyboard Input page in Xconfig.

Exceed Menu	Submenu	Description of available Exceed menu options
	Move	This option changes the position of the Exceed menus. The setting for this option is saved when you terminate the Exceed X server. Available in Single Window Mode.
	Full Size	Restores the root window to its full size after it has been resized in the following context: <ul style="list-style-type: none"> ▪ Single Window Mode is enabled at the Screen page in Xconfig. ▪ Full Screen check box is cleared ▪ Panning check box is selected
	Switch To Default Desktop	Allows you to switch back from the custom desktop to the default desktop in Windows. The option is available if Exceed is running on the custom desktop. Available in Single Window Mode.
	X Server Reset	Resetting the server terminates all X clients, reloads all databases, and re-initializes the Exceed X server.
	Root Mouse Actions To X	Lets you specify whether mouse actions on the Windows desktop are processed by Exceed. This option is available in Multiple Window Mode only.
	Send Touch Events To X	Specify whether touch-screen actions are processed by Exceed.
Help	View Help	Displays help topics to help you learn more about the product.
	About Exceed	Displays the basic Exceed product information.

3.10.4 Full Screen Toolbar

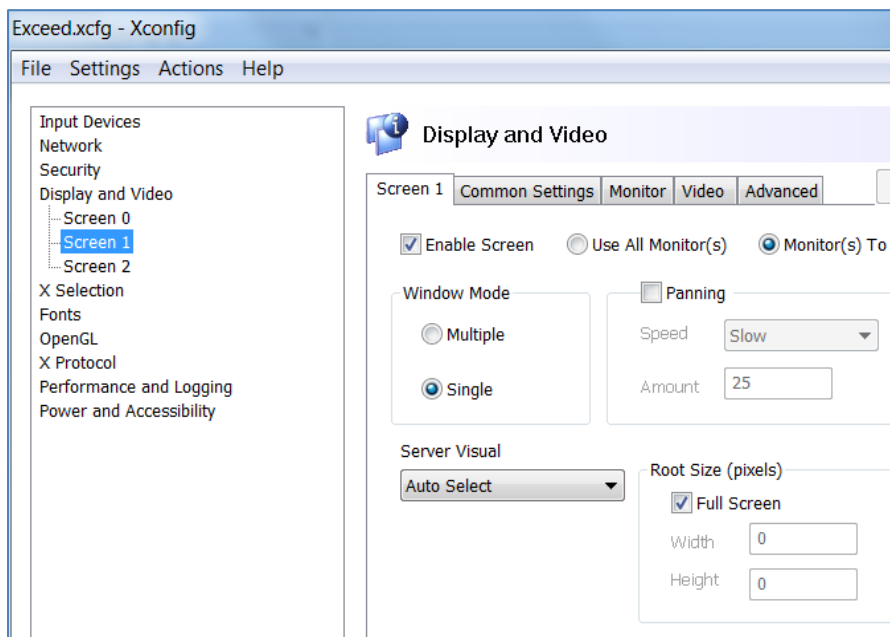
Exceed now provides a Full Screen toolbar, for a quick and smooth access to Exceed menu and its tools.




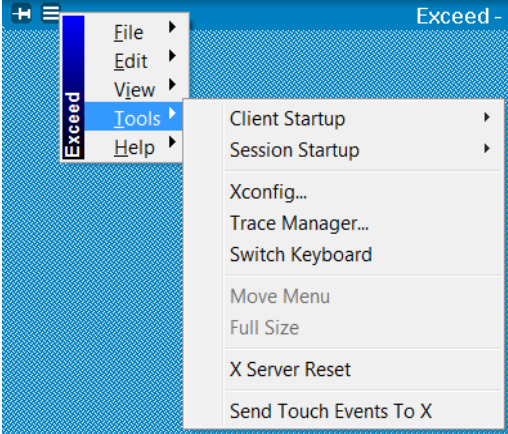



The availability of the toolbar must be configured in Xconfig. The toolbar may be pinned to the screen, supports the F11 toggle, and auto-hiding. It also allows you to minimize or restore a window, and close an X Window session.



To enable Full Screen mode:

1. Launch Xconfig, go to the Display and Video settings, and select the Screen tab.
2. Under Window Mode, select Single.
3. Under Root Size (pixels), select the Full Screen check box.
4. Click Save. As a result, Full Screen toolbar becomes available in Exceed.



Features of the Full Screen toolbar:

Task	Steps	Toolbar Icon
Display the configured Full Screen toolbar	Place the mouse cursor on the top edge of the screen. The toolbar is displayed. Move the pointer away, and the toolbar is no longer shown.	N/A
Toggle a Full Screen toolbar in Exceed	Press the F11 button on the keyboard, to hide the Full Screen toolbar. Press the button again, to redisplay the toolbar.	N/A
Pin the toolbar to the screen	Click the <i>Pin</i> icon on the toolbar. The toolbar remains on the screen until you click the icon again, and is not hidden once you move the mouse pointer away from the top edge of the screen.	
Display the Exceed menu	Click the <i>Menu</i> icon on the toolbar, and select the preferred option.  <p> Note: The availability of the View menu and its options depends on a particular Window Mode and monitor configuration.</p>	
Minimize the window	Click the Minimize icon.	

Task	Steps	Toolbar Icon
Restore the minimized window.	Click the Restore icon.	
Close the X Window session	Click the <i>Close</i> icon on the toolbar. You are prompted to confirm whether you want to close the Xsession. Click <i>OK</i> .	

3.10.5 UNICODE Support in Directory Services Explorer

Support for display of UNICODE characters has been added to Directory Services Explorer.

3.10.6 Detailed Tracing in Exceed

Generating a trace in Exceed now results in a zipped file that includes additional details. The following information is provided:

- trace
- exceed.xcfg
- exceed.log
- keyboard files
- Xstart file

This allows for easier reporting of issues to the OpenText Customer Support team and facilitates troubleshooting. See also *Detailed Log* on page 14.

3.10.7 Ability to Add Comments to a Trace

Users can now add comments to a trace, to facilitate troubleshooting.

To add comments to a trace:

1. From the Exceed Tools menu or Exceed Toolbar, select Trace Manager. A window is displayed, enabling you to type the comment.
2. Click Insert, or press ENTER on the keyboard, to insert the comment you typed.

3.10.8 Changes to Installation Features

The Exceed Core feature in the Setup Wizard now includes Xstart and Misc fonts, which in turn forces Directory Services feature to be installed as well. This installs the Kinput2, HWM and Xinput2Magellan features, as well as Xstart files that can be used to access these features.


With the installation of the Exceed Connection Tools feature, Xsession and Exceed Connection Manager are also installed. The Exceed Connection Tools feature no longer includes Xstart.

3.11 Xconfig

This section describes changes introduced in Xconfig.


3.11.1 New Resizing Policies for Single Window Mode


In addition to Fixed and Scaled, Exceed now allows Dynamic resizing of the root window and its contents.

-  **Note:** When launching Exceed in Single Window Mode on monitors that use different resolutions, the root window uses the resolution of the smallest display. This eliminates the need for scroll bars.

To configure Single Window Mode (SWM) resizing behaviour:

1. Go to *Xconfig > Display and Video > Common Settings*.
2. From the Resizing Policy menu, select the desired option.

Scaling option	Details
Fixed	<p>In this mode, a user (or the system) defines the size of the root window. By default, an X session uses Fixed resizing policy. If you click the Maximize button in the toolbar, the main window is restored to its original position and size.</p> <ul style="list-style-type: none">  Note: Scroll bars appear automatically, when a Fixed policy is in use. GLX applications will be terminated when you switch from the Fixed to Scaled resizing policy.
Dynamic	<p>Allows you to resize the window dynamically. The X application (such as the KDE environment) will reflect this and fit in the new window. For example, you may switch from Single to Multiple Monitor Mode (or vice versa). The X applications will renegotiate the new root window size and be redrawn appropriately based on the new information. They would not be distorted as it might happen in the Scaled mode. The minimum size of the window has been set to 800x600. You cannot resize the window to be smaller. When the window is maximized, the window and root window will</p> <ul style="list-style-type: none"> •cover the work area.

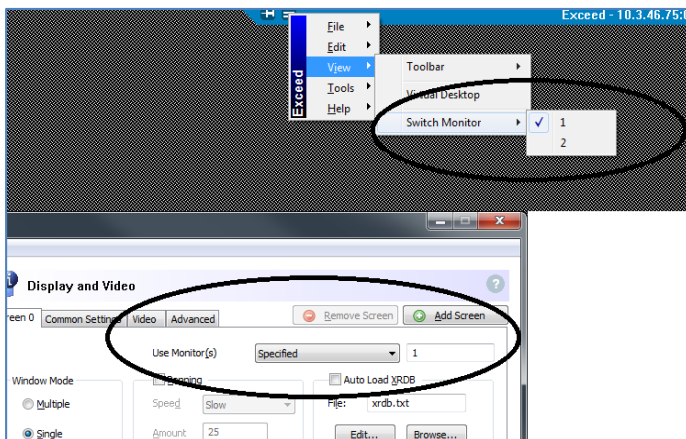
Scaling option	Details
Scaled	<p>When you resize the window, the size of the root window does not change, but the contents of the X session scale up/down accordingly. For example, if multiple X sessions are running, the user may view them as thumbnails. Scaling does not affect the behavior of UNIX applications, because the root window size remains the same.</p> <p>When you select the Scaled policy you have the following options:</p> <ul style="list-style-type: none"> ▪ <i>Select Maintain Aspect Ratio</i>—In this case, the contents of the X session scale so that their original ratio is preserved, and the objects in the main window do not appear distorted. ▪ <i>Do not select Maintain Aspect Ratio</i>—In this case, the main window of the X session and its contents will be resized, but their original ratio will not be maintained, and the objects in the window may appear distorted. <p> Note: You cannot switch directly from a <i>Scaled</i> to <i>Dynamic</i> policy, or <i>Dynamic</i> to <i>Scaled</i>. You must switch to and apply a <i>Fixed</i> resizing policy, before choosing <i>Scaled</i> or <i>Dynamic</i>.</p>

3.11.2 New Options for Monitor Selection in Xconfig

If multiple monitors are attached to your machine, you can use all of them, to display an X session, or you can specify which monitors you want to use. The following options for monitor selection are now available:

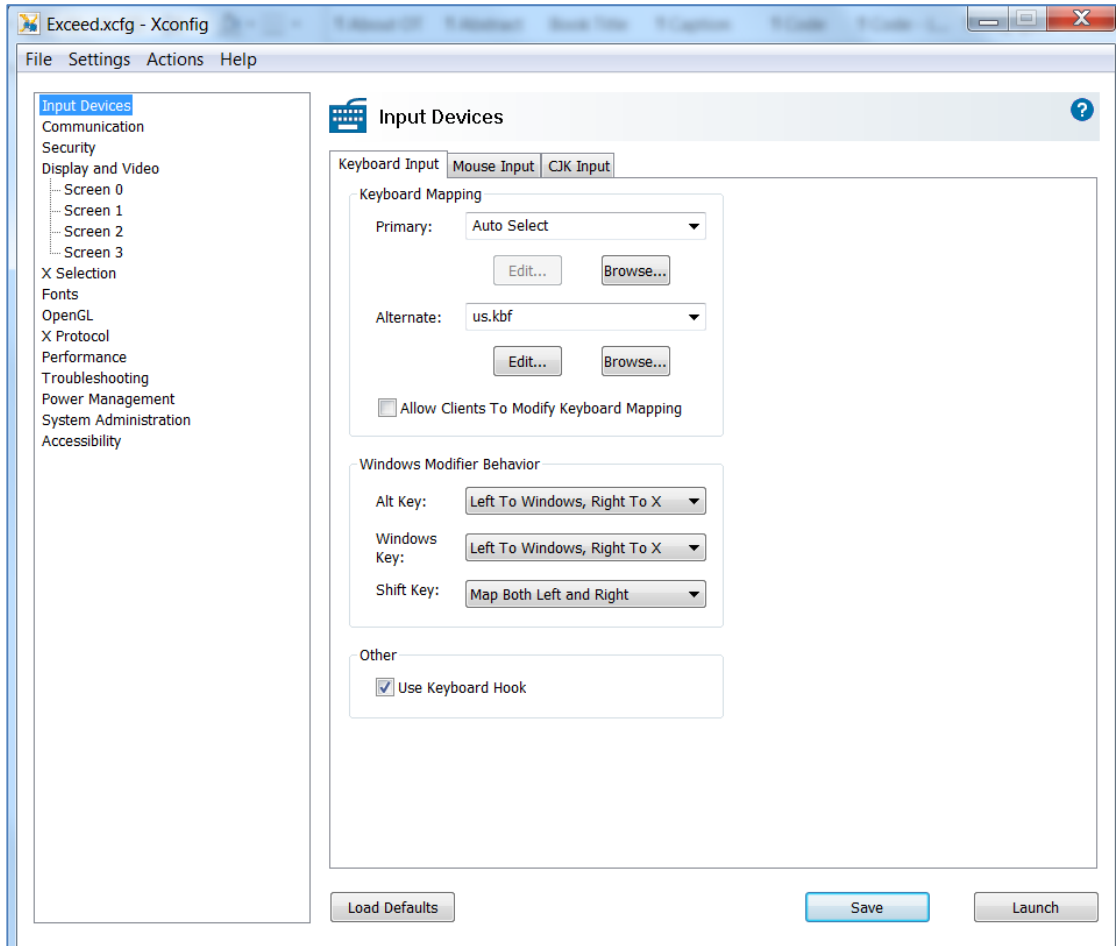
Monitor option	Details
Use All	Enables the use of all available monitors.
Use Primary	Enables the use of only your Primary Monitor.
Use all but Primary	Enables the use of all non-primary monitors.
Specified	Lets you specify which monitors to use. Type the monitor number in the adjacent box. Up to 32 monitors are supported. To use multiple monitors, you must install multiple video cards or a video card that supports multiple monitors on your computer.

- Note:** In the Exceed View menu, the *Switch Monitor* option is available only in Full Screen mode, when there are multiple screens available to the system. To switch screens while in Full Screen mode, click the Exceed Menu button in the Full Screen toolbar, and select View > Switch Monitor.



3.11.3 New Xconfig User Interface

The Xconfig user interface has been redesigned.



UI Modification	Details
New tabs and menus	<p>The following Xconfig tabs are now available:</p> <ul style="list-style-type: none"> Input Devices, Communication, Security, Display and Video, X Selection, Fonts, OpenGL, X protocol, Performance, Troubleshooting, Power Management, System Administration, Accessibility <p>The following Xconfig menus are now available:</p> <ul style="list-style-type: none"> File, Settings, Actions, and Help menus

UI Modification	Details
New UI options for monitor selection	See New Options for Monitor Selection in Xconfig on page 29.
New UI for selecting a resizing policy	See New Resizing Policies for Single Window Mode on page 27.

3.11.4 Ability to use wildcards to configure host access (in xhost.txt)

Connectivity Version 15.0 enables you to use wildcards, to allow specific hosts to access your Exceed X server. This Host Access Control List is specified in the `xhost.txt` file.

To access `xhost.txt` file:

- In Xconfig, at its Security tab, select File, and then click Edit. The `xhost.txt` file is open in the text editor.

In this file you can document the list of host names or IP addresses that can connect to Exceed. This list can use wild cards. Example wild cards are listed below:

```
rnd*.opentext.com
rnd.*.com
rnd.opentext.???
10.3.15.*
10.3.*
```

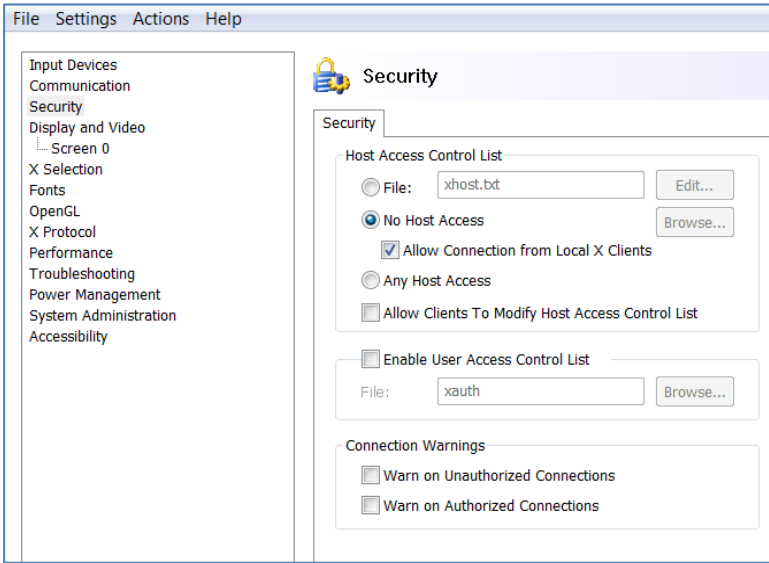
- 📖 **Note:** If you select the `xhost.txt` file, you can use only Passive startup mode on the Communication page.

3.11.5 Ability to specify which network adapter and which IP address to use

Xconfig now allows user control over which interface(s) the Exceed X Server listens on, both through a configuration file settings and command line settings, especially but not exclusively on multihomed hosts.

Feature	Details
<p>Specify which IP address to use and where to apply it</p>	<p>If you have multiple adapters or Virtualized Network, you can configure the IP address Exceed will use and how this IP address needs to be applied. In Xconfig, under Communication tab > Network Adapter, select one of the following three options:</p> <ul style="list-style-type: none"> ▪ Adapter IP Address: Type an IP address ▪ Network Interface: Select which adapter you want Exceed to use. ▪ Virtualized IP address : use if you have virtualized network <p>After you have configured the IP address Exceed should use, specify how the IP address will be applied:</p> <ul style="list-style-type: none"> • <i>In Exceed Title</i>—the IP address will be displayed in the Exceed Windows title bar, and the Full Screen Toolbar. • For XDMCP Session: Exceed will send this IP address as the DISPLAY to XDMCP Server • To Set DISPLAY Variable: Exceed will set the DOS environment DISPLAY="the IP address for Exceed to use" <div data-bbox="716 1234 1299 1731" style="border: 1px solid #ccc; padding: 10px; margin: 10px 0;"> <p>Communication</p> <p>Startup</p> <p>Mode: Passive Configure...</p> <p>Display Number: <input type="text" value="0"/></p> <hr/> <p>Network Adapter(s)</p> <p><input type="radio"/> Auto Select</p> <p><input checked="" type="radio"/> Adapter IP Address: <input type="text" value="1.1.1.1"/> Settings...</p> <p><input type="radio"/> Network Interface</p> <p><input type="radio"/> Virtualized IP Address</p> <p>Use IP Address:</p> <p><input checked="" type="checkbox"/> In Exceed Title</p> <p><input type="checkbox"/> For XDMCP Session</p> <p><input type="checkbox"/> To Set DISPLAY Variable</p> </div>
<p>Specify which adapter to use, if you have multiple adapters</p>	<p>A new command line option allows you to specify which Exceed adapter to use as the DISPLAY. Enter the following command:</p>

3.11.6 Other Xconfig features

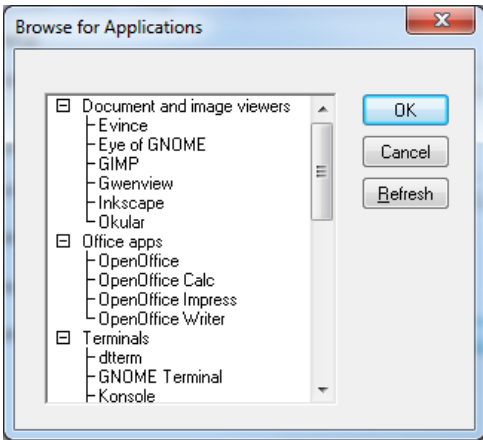
Feature	Details
<p>New user interface for enabling or disabling local X client connections in Xconfig</p>	<p>A new user interface option in Xconfig allows you to enable or disable the following functionality:</p> <ul style="list-style-type: none"> • <i>Allow Connection from Local X Clients</i> <p>This option is configured in Xconfig, under the Security tab.</p> 

3.12 Xstart

This section describes changes introduced in Xstart.

3.12.1 New Xstart User Interface

Xstart user interface has been redesigned.

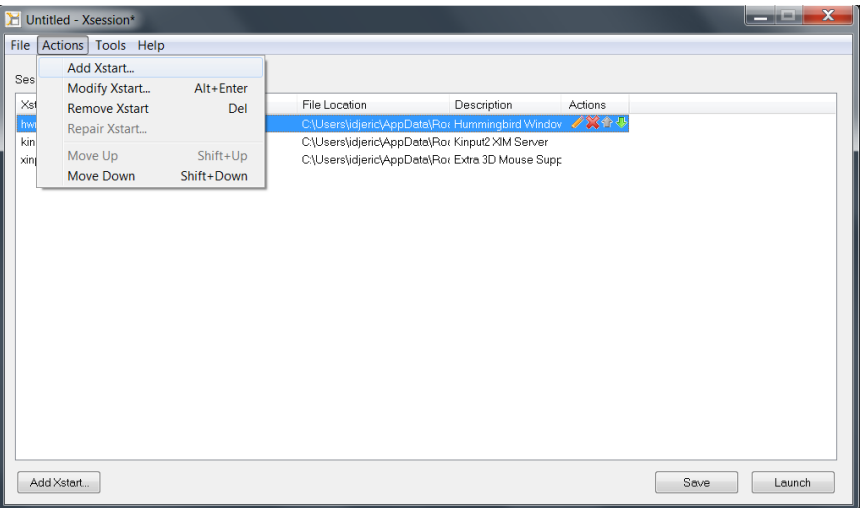
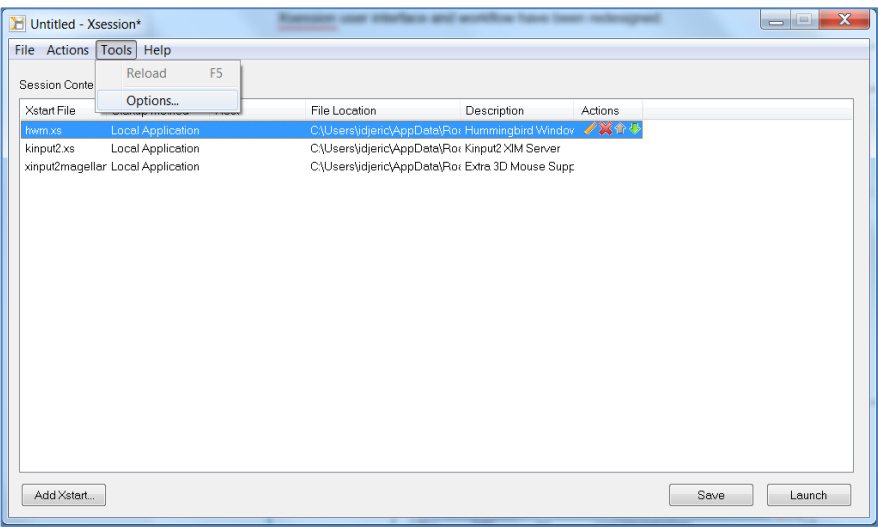
UI modification	Details
Updated Method menu – due to disabling of insecure connection methods	Xstart can now be configured to disable insecure connection methods like REXEC and RSH. See Disabling insecure connection methods in Xstart on page 14.
New list of applications listed in the Browse dialog	<p>The list of browsable applications has been replaced with a more up-to-date list of applications, sorted by program functionality. These Xstart commands include several path options to work on the majority of popular X11 hosts.</p> 
The Xstart Settings page has been reorganized	The Startup tab has been renamed to Prompts, and the Security tab is now the default view.


3.12.2 New Command Line Option to Specify Xconfig in an Xstart file

Feature	Details
<p>Command line option for specifying Xconfig in an Xstart file</p>	<p>If Exceed is already running, the new command line is added when a new instance of Exceed is called. Command line option is -o.</p> <p>Example:</p> <pre>xstart -o single.xcfg -u testing -p testing -m telnet -h hostname -c "xterm -display @d"</pre>

3.13 Xsession

The Xsession user interface and workflow have been redesigned.

Modification	Details
<p>New Action menu</p>	 <p>The screenshot shows the 'Actions' menu open over the Xsession window. The menu items are: Add Xstart..., Modify Xstart... (Alt+Enter), Remove Xstart... (Del), Repair Xstart..., Move Up (Shift+Up), and Move Down (Shift+Down). The main window displays a table with columns 'File Location', 'Description', and 'Actions'. The table contains three entries: 'C:\Users\jdjenc\AppData\Roam\Hummingbird Window', 'C:\Users\jdjenc\AppData\Roam\Kinpu2 XIM Server', and 'C:\Users\jdjenc\AppData\Roam\Extra 3D Mouse Supp'. Buttons for 'Add Xstart...', 'Save', and 'Launch' are visible at the bottom.</p>
<p>New Tools menu</p>	 <p>The screenshot shows the 'Tools' menu open over the Xsession window. The menu items are: Reload (F5) and Options... The main window displays a table with columns 'Xstart File', 'Local Application', 'File Location', 'Description', and 'Actions'. The table contains three entries: 'hwm.xs Local Application C:\Users\jdjenc\AppData\Roam\Hummingbird Window', 'kinpu2.xs Local Application C:\Users\jdjenc\AppData\Roam\Kinpu2 XIM Server', and 'xinput2mageller Local Application C:\Users\jdjenc\AppData\Roam\Extra 3D Mouse Supp'. Buttons for 'Add Xstart...', 'Save', and 'Launch' are visible at the bottom.</p>

Modification	Details
New toolbar in the Xsession dialog	<p>The Xsession dialog now includes an Actions toolbar. It allows you to work with the associated Xstart files.</p> <div data-bbox="684 591 818 663" style="text-align: center;">  </div> <ul style="list-style-type: none"> ▪ <i>Modify</i>—Click to edit the Xstart details. ▪ <i>Remove</i>—Click to delete the Xstart file from the list. ▪ <i>Move Up</i> —Click to move the Xstart file up in the list. ▪ <i>Move Down</i>—Click to move the Xstart file down in the list.

3.14 Exceed XDK

This section describes the changes introduced in OpenText Exceed XDK.

- Most of the local X clients that were once in OpenText Exceed or OpenText Exceed 3D have been moved to OpenText Exceed XDK. For details, see *Local X Clients* on page 23.
 - 32bit Local X Clients are provided in the `bin` folder.
 - 64bit Local X Clients are provided in the `bin64` folder.

To allow for proper redistribution of local X Clients built using the Exceed XDK the following directories have been provided:

- `Redist32` - Runtime dlls for 32bit clients
- `Redist64` - Runtime dlls for 64bit clients
- `Resources` - resource folder for local x clients

Please review the `readme.txt` files contained in the appropriate `Redist` folder to determine which files you may need to include with your application.

- OpenText Exceed XDK no longer supports `MinGW`. Previously, users of Exceed XDK could build `MinGW` applications using the Exceed XDK environment.
- OpenText Exceed XDK is now versionless. It is forwards and backwards compatible with all versions of OpenText Exceed. This means that the Exceed XDK library (`xlib.dll`) now looks for the highest version of Exceed on this computer, and starts it. The application will use the Resource environment provided by Exceed. If Exceed is not installed on this computer, to allow the application to run you must specify the display ID. The application will use the Resource environment provided by Exceed XDK.

3.15 Local X Clients

Most of the local X clients, previously packaged with OpenText Exceed and OpenText Exceed PowerSuite are now packaged with OpenText Exceed XDK. Some remain packaged with OpenText Exceed. Local X clients in OpenText Exceed XDK no longer have individual icons. All the shortcuts for local X clients in OpenText Exceed XDK may be accessed from a platform specific Local X Client Start menu shortcut.

3.15.1 Local X Clients in OpenText Exceed XDK

Exceed XDK now provides the Custom Setup option, during installation. Select *Local X Clients* or *Local X Clients Source*. The latter option is not a prerequisite for installing Local X Clients.

To install local X clients:

- Go to *Start > All Programs > OpenText Exceed XDK > Local X Clients (32bit)*. If you choose this option, 18 subfeatures are installed.
- or-
- Go to *Start > All Programs > OpenText Exceed XDK > Local X Clients (64bit)* = If you choose this option, 17 subfeatures are installed.

Without Exceed installed, the local X clients cannot be launched because `humprdex.dll` is not present. The user needs to install Exceed XDK with an Exceed product that contains `humprdex.dll` if they want to run the local X clients.

The following local X clients have been moved to Exceed XDK:

Feature	Binary
Atlantis	<code>atlantis.exe</code>
Bitmap	<code>bitmap.exe</code>
Circles	<code>circles.exe</code>
Editres	<code>Editres.exe</code>
Vulcan Gunner	<code>glutMech.exe</code>
GLXinfo	<code>glxinfo.exe</code>

Feature	Binary
Ico	ico.exe
Insect	insect.exe
Kinput2 XIM Server	kinput2.exe
Xmaze	maze.exe
Xmt Mockup	mockup.exe
MotifAnim	motifani.exe
MWM	mwm.exe
Periodic	periodic.exe
Seltest	seltest.exe
Colors	showcmap.exe
XDK core	uil.exe
XDK core	uil12.exe
XDK core	uil12.exe
XDK core	uil21.exe
Xdpyinfo	xdpyinfo.exe
Xev	xev.exe
Xlogo	xlogo.exe
XDK core	xprop.exe
ZoomDino	zoomdino.exe

3.15.2 Local X Clients in OpenText Exceed

The following local X clients are now packaged with Exceed:

Feature	Binary
Kinput2	Kinput2.exe
Hwm	Hwm.exe
Input2Magellan	Input2Magellan.exe

3.16 OpenText Setup Configuration Wizard (Sconfig)

This section describes the changes introduced in OpenText Setup Configuration Wizard.

3.16.1 Enabling FIPS Only Mode

Using OpenText Setup Configuration Wizard, you can enable or disable FIPS compliant ciphers and encryption from a single location. Once the FIPS only mode is enabled, it becomes the default mode. To ensure that only FIPS mode is enabled configure the following option in the Properties section of the OpenText Setup Configuration Wizard:

```
Security.UseFIPSONly
```



3.17 OpenText HostExplorer and HostExplorer FTP

This section describes changes that affect HostExplorer and HostExplorer FTP






- OpenSSL Update on page 11
- HostExplorer Security Enhancements on page 12


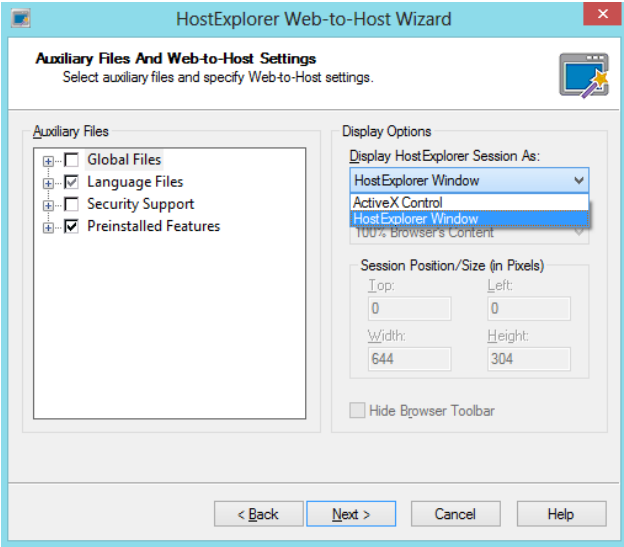
3.18 OpenText Web-to-Host and Deployment Wizards

This section describes the changes introduced in OpenText Web to Host and Deployment Wizard, which allows you to create Web-deployable installations of certain OpenText Connectivity products.

-  **Note:** 64-bit versions of Windows require deployment of the 64-bit version of Connection Central and HostExplorer FTP.
-  **Note:** Profiles used in Web Deployment should be saved prior to building a new Web Project.

The following changes have been introduced:

Feature	Description
HostExplorer x64 can now be deployed in Internet Explorer (Java only).	HostExplorer x86 can be deployed in IE using ActiveX or Java. When ActiveX is not available, a fallback to Java has been added.
Support for modern browsers	Version 15 supports modern browsers, such as the latest Firefox and Chrome with Java plug-in/add-on enabled. For details, see Web Browsers on page 44.
Improved error handling	Updated error messages for an OpenText Component Deployment now provide more contextual information, depending on a browser configuration. For example, the error message may inform you that: <ul style="list-style-type: none">  There is an attempt to download the OpenText Component Deployment Active X Control. You are reminded to enable any security options necessary in your browser to permit this.  The Protected Mode is detected. You cannot proceed until the mode is turned off.  Java is required but not installed. You are prompted to install it.  You are running a browser that works with the deployment but that has neither Java nor Active X control support available. You are provided with a download link.  Product deployment is complete and the browser window may be closed

Feature	Description
<p>Web Deployed Printer Profile is now viewable outside of the browser.</p>	<p>Web Deployed Printer Profile is now viewable outside of the browser. The browser may be closed.</p> <p>To achieve this for the Version 15.0 printer profiles:</p> <ol style="list-style-type: none"> 1. Launch Host Explorer Web-to-Host Wizard, and display the following dialog box: <i>At the Auxiliary Files and Web-to-Host Settings</i>. 2. Under <i>Display Options</i>, select <i>HostExplorer Window</i>, so that it defaults to Window instead of an ActiveX object. <p> Note: The ability to change a window size in an ActiveX Object case is still available.</p> 

3.19 Updated Event Monitoring Server

OpenText Connectivity products include a built-in compliance and usage tracking mechanism. Using Event Monitoring Server and Event Monitoring Client, administrators can track the use of OpenText Connectivity products.

The Event Monitoring Server for OpenText Connectivity 15.0 products is now compatible with:

- Internet Information Services (IIS) 7 and 7.5 for Windows® Server 2008 and Windows 2008 R2
- MSSQL 2005 and later

- **Note:** The supplied script `hems-create_database-mssql.sql` for SQL Server requires a full path to the database files. Ensure that this full path is specified.

4 Packaging and Documentation

Software downloads and documentation for OpenText Connectivity products are available on the OpenText Knowledge Center (<https://knowledge.opentext.com/>).

4.1 Related Documentation

The following guides provide additional information about the version 15 products. The guides can be download from the OpenText Knowledge Center (<https://knowledge.opentext.com/>).

- *OpenText Connectivity Installation Guide*
- *OpenText Connectivity Migration Wizard Guide*
- *OpenText Connectivity Web-to-Host and Deployment Wizard Guide*
- *OpenText Exceed User's Guide*
- *OpenText HostExplorer User's Guide*
- *OpenText HostExplorer Programmer's Guide*
- *OpenText HostExplorer Basic Language Programmer's Guide*
- *OpenText Secure Shell User's Guide*

5 Supported Environments and Compatibility

This section provides details about supported platforms, systems, and versions.

5.1 Supported Operating Systems (OSs)

This section lists the operating systems supported by Connectivity 15 release.

Operating System (OS)	Details	Affected Connectivity 15 products
Windows® 8.1 Enterprise (32-bit and 64-bit)	Certified	All
Windows® 7 Enterprise (32-bit and 64-bit)	Certified	All

Operating System (OS)	Details	Affected Connectivity 15 products
Windows 8.0 Enterprise (32-bit and 64-bit)	Supported	All
Windows Server 2008 R2 (64-bit)	Supported	All
Windows Server 2012 R2 (64-bit)	Supported	All
Windows Server 2008 R2 with Terminal Services / Citrix XenApp	Supported	All (Except Exceed XDK)
Windows Server 2012 R2 with Terminal Services / Citrix XenApp	Certified	All (Except Exceed XDK)

5.2 Web Browsers

This section lists the browsers supported by OpenText Deployment Wizard.

Browser	Details
Internet Explorer 11	Note: 64-bit IE only supports Java deployment. 32-bit IE supports ActiveX with Java fallback.
Mozilla Firefox	
Google Chrome	

5.3 Language Support

OpenText Connectivity is currently localized in the following languages. Future releases may add additional languages.

Component	EN	DE	FR	IT	ES
-----------	----	----	----	----	----

All Components	B	UI	UI	UI	UI
----------------	---	----	----	----	----

UI = user interface only

B = both user interface and online help

6 Installation, Upgrade, and Patch Notes

This section provides additional installation and upgrade information, including related or third-party product information and any required critical patches.

- 📄 **Note:** OpenText Secure Shell Version 14 and earlier are not compatible with Version 15 products. When migrating your Connectivity software to Version 15, please update OpenText Secure Shell to Version 15.

6.1 Installation Notes

Before you install OpenText Connectivity products, review these additional installation notes and verify related product or third-party product requirements.

- See *OpenText Connectivity Installation and Administration Guide* for more details.

To install OpenText Connectivity Version 15.0:

1. Visit OpenText Knowledge Center (<https://knowledge.opentext.com/>).
2. Locate the OpenText Connectivity page for downloads, and the OpenText Connectivity installation packages.
3. Download the installation package/file for the product you want to install. Both 32 and 64 bit versions are available. You can download:
 - a product ISO file which can be mounted or burned to physical DVD media. For example, `OpenTextExceed15.iso`
 - a DVD ESD self-extracting executable file which will expand the DVD contents (including `msetup.exe`) to a folder on your computer .
4. Once you have access to the DVD folder tree, run the `msetup.exe` to continue the installation process.
5. Follow the on-screen prompts, to complete the installation.

6.2 Upgrade Process for PowerSuite 14 and NFS Client 14

This section provides the upgrade instructions. For more details, refer to the *OpenText Connectivity Migration Wizard Guide*.

To upgrade (migrate) the OpenText Exceed PowerSuite or NFS Client (from Version 14.0 to Version 15.0):

1. Visit OpenText Knowledge Center (<https://knowledge.opentext.com/>).
2. Under *Product > Downloads*, search for the relevant download folder.

If you are upgrading from...	Do this...
Exceed PowerSuite 14	<ul style="list-style-type: none"> • Search for <i>Exceed Family-Downloads</i>, and then click <i>Exceed PowerSuite Download</i>. • Open <i>Exceed PowerSuite 15</i> folder, and then open the <i>Connectivity Migration Wizard</i> folder.
NFS Client 14	<ul style="list-style-type: none"> • Search for <i>Network File System (NFS)-Downloads</i>, and then click <i>NFS Client 15 Downloads</i>. • Open <i>NFS Client 15</i> folder, and then open the <i>Connectivity Migration Wizard</i> folder.

3. Download the `ConnectivityMigration.zip` file, and extract the following file contents:

Extracted item(s)	Details
Files	<ul style="list-style-type: none"> • <code>UpgradeSetup.exe</code> • <code>CA_FSTWIZARD.exe</code> • <code>Setup.ini</code>
Target Folders/Directories	<ul style="list-style-type: none"> • <code>\Exceed</code> • <code>\Exceed 3D</code> • <code>\HostExplorer</code> • <code>\NFS Solo v14</code>

4. Double-click `UpgradeSetup.exe`, to launch your OpenText Connectivity Migration Wizard. The *Welcome* page is displayed.
5. Click *Next*, and then follow the on-screen prompts.
6. For more details, refer to the *OpenText Connectivity Migration Wizard Guide*.

7 Fixed Issues in Version 15.0

This section provides information about issues that have been fixed in this release.

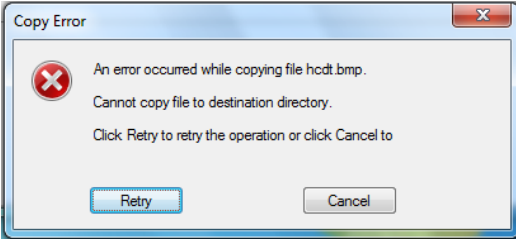
- For information on issues fixed prior to Connectivity Version 15.0, in Service Packs and patches, visit OpenText Knowledge Center (<https://knowledge.opentext.com/>) and refer to the relevant documentation (Service Pack Release Notes and Hot Fix Notes).
- Additional issues have been fixed in this release. The following table lists some of the fixes requested by the customers, since the last release. For more information about additional issues fixed in Version 15.0, contact an OpenText Customer Service representative.


Issue ID	Issue Description
CONN-222	<p>In Classic FTP, there is a new prompt for confirming a file name change before the file is overwritten.</p> <ol style="list-style-type: none"> 1. Run Classic FTP, and enable Prompt for Remote Filenames. 2. Connect to <code>qaxredhat</code>. 3. Rename a file and transfer it to a remote location. If any file with the same name already exists in this location, a prompt is displayed, asking you to confirm that you want to overwrite this file.
CONN-554	<p>Under Xconfig > Security page, you can set the DISPLAY Variable as follows:</p> <ul style="list-style-type: none"> • Exceed will set the DOS environment DISPLAY="the IP address for Exceed to use"
CONN-1345	<p>CAB source files are provided, to reduce the installation time. For more information about the changes for SECUREPAIR, which were added to the Windows installer, see http://support.microsoft.com/kb/2918614),</p>

8 Known Issues in Version 15.0

The following known issues exist in this release.

Issue ID	Issue Name	Issue Description
CONN-1452	Exceed XDK requires that XDK requires that Safe Exception Handlers are disabled	<p>By default Visual Studio 2013 wants to use Safe Exception Handlers (/SAFESEH), which the XDK libs do not support. As a result, when building Release builds you may get the following error:</p> <pre>fatal error LNK1246: '/SAFESEH' not compatible with 'x64' target machine</pre> <p>To resolve the issue:</p> <ol style="list-style-type: none"> 1. Go to the project <i>Properties</i> > <i>Linker</i> > <i>Advanced</i> 2. Set the option <i>Image Has Safe Exception Handlers</i> to No.
CONN-2214	Authentication failed with a large Key (UserKey authentication)	User authentication may fail with an OpenSSH / FIPS 186-3 encryption for DSA Mac size.
CONN-2333	Connecting to a host server causes a message - Host Identification Has Changed.	<p>When connecting to a host server for which the server key was saved in OpenText Connectivity Version 14.x, a pop-up message is displayed indicating that the server key has changed.</p> <p>This issue is caused by the new OpenSSL version.</p> <p>In fact, the key has not changed, but cannot be replicated with the new version of OpenSSL.</p> <p>Workaround: The user must accept the new key. After the key has been accepted, it is stored and used correctly.</p>
CONN-2566	OpenGL Performance	By default, OpenText Exceed 3D Version 15.0, favours giving expected output for undefined 2D-over-3D drawing, rather than giving maximum performance. Depending on the way an application renders and its window size, better performance may be achieved by setting the following registry DWORD value to 0:

Issue ID	Issue Name	Issue Description
		HKCU/Software/Hummingbird/Connectivity/15.00/Exceed/XServer/GlxRefreshMirrorMode
CONN-2543	Product migration deployment - The All User installations not possible with current versions of Internet Explorer (IE)	If an existing Connectivity product was Web Deployed through an older browser that was capable of Per Machine installation (for example, Windows® 7 with Internet Explorer 8 run with the Administrator privilege) that product is not upgradable by Version 15.0 Web Deployment projects. It must be uninstalled before the Version 15.0 Web Deployed project is installed. This is because All User installations are no longer possible with current versions of Internet Explorer. They are disabled for all Version 15.0 Web Deployed projects.
CONN-2548 CONN-2509	Project involving HostExplorer FTP not upgraded to Version 15.0	The OpenText Component Deployment runtime does not handle replacement of files that are in use. If you are using deployments that involve HostExplorer FTP, it is recommended that you log off, and then log in again, to release any files that File Explorer was using prior to launching the HostExplorer FTP deployment.
CONN-2711	Upgrading from older Web Deployed Versions causes a copy error	<p>If a previous version of a Web Deployed product has been installed an older version of the OpenText Component Deployment ActiveX control may have been installed on a Per-Machine basis. The default method for deployment of the same ActiveX control in Version 15 is Per-User. When you attempt to upgrade, the Per-User ActiveX cannot replace the existing Per-Machine one. This will cause an error dialog box to be displayed.</p> 

Issue ID	Issue Name	Issue Description
		<p>Please press <i>Cancel</i> which will allow the installation to proceed using a Per-Machine ActiveX. The upgrade process will be completed successfully.</p> <p>To prevent the error dialog box from being displayed, disable Per-User ActiveX in Version 15.</p> <p>To do so, use the following procedure:</p> <ol style="list-style-type: none"> 1. Modify your OpenText Project Deployment Wizard Profile in Notepad. 2. Enable Disable Per-User ActiveX Installs (set the value to On). 3. Rebuild the Project.
CONN-2716	Upgrading from older Web Deployed Versions requires that profiles must be resaved	<p>If the same profile is used to create both an older version of a Web Deployment Project and a version 15 Web Deployment Project, upgrading from the older version Web Deployment to the Version 15 Web Deployment may result in missing Registry values (including a language selection). To avoid this potential issue, it is recommended that you change the timestamp of the profile (resave the file) prior to building the new Version 15 Web Deployment Project.</p> <p>To do so, use the following procedure:</p> <ol style="list-style-type: none"> 1. Launch <code>cmd.exe</code> <code>C:\Windows\System32\cmd.exe</code> 2. Navigate to your local or Per-Machine profile directory using the <code>cd</code> command. For example: <pre>cd "C:\Users\username\AppData\Roaming\Hummingbird\Connectivity\15.00\Profile"</pre> 3. In the Profile folder, resave the files using the <code>copy</code> command. For example: <pre>copy /b MyServer.HEP +,,</pre> <p> Note: Make sure to replace <code>MyServer.HEP</code> with the correct file name.</p>

9 Discontinued and Deprecated Products and Features

This section lists all of the product features and components that have been deprecated or discontinued in the Version 15 release.

Item	Details
FTP over SSL (Implicit)	The Implicit security is automatically turned on when the FTP client makes a connection to an FTP server, which then defines the specific port (990) that the client should use for secure connections. The functionality of FTP over SSL Implicit has been deprecated.
TSE transforms in the Setup tree TSE terminology	<p>Due to simplified installation process, legacy TSE transforms have been removed from the Setup tree and moved to the following folder on the product DVD.</p> <pre data-bbox="571 1066 1070 1093">\Extras\RDSProductAccessControl</pre> <p>The TSE suffix in the transform file names have been changed to RDS. This packaging solution continues to ensure Product Access Control capabilities.</p> <p>The Terminal Server, mentioned in the User Manager Help, is now referred to as <i>Windows Server with RDS role enabled</i>.</p>
HostExplorer HTTP Proxy Server	This component has been deprecated in Version 15.0 and is provided on the product CD for backwards compatibility only. HostExplorer can be used instead with any commercial HTTP Proxy server.
Documentation folder for Connectivity products	<p>Documentation folder and individual files are no longer supplied with the product installer, or accessible from the Start menu.</p> <p>Documentation for Connectivity products is now available on the OpenText Knowledge Center (https://knowledge.opentext.com/).</p>

Item	Details
Support for Microsoft® Windows XP, Windows Vista, Windows Server 2003, and Windows Server 2008 (no service pack).	This support is no longer provided.
Support for MySQL in Event Monitoring Server	This support is no longer provided.
Smart Card Manager	The Smart Card Manager was used to store passwords and keys to a smart card. This method of using smart cards as storage devices is considered obsolete and the wizard has been removed.
Xweb	<p>The following Xweb related functionality has been removed from Connectivity 15:</p> <ul style="list-style-type: none"> ▪ Xweb Wizard (as a component in Setup and an application in the Exceed group) ▪ Xweb configuration in the Xconfig Security group ▪ The Extend option in the Xconfig Security group ▪ The Create Xweb Package option, in Exceed Connection Manager
Xconfig console and Xsession console apps	These MMC console apps have been removed from the Exceed product.
Xstart availability under Exceed Connection Tools	The Exceed Connection Tools feature no longer includes Xstart.
Terminal Emulator in Xstart	The Terminal Emulator option has been removed from Xstart.
X Client Wizard Mode in Xstart	This wizard has been removed. It provided an additional way to create Xstart files. The Wizard mode had to be invoked through a command line only.

Item	Details
Xstart outdated startup methods	<p>The following Xstart startup methods have been removed from Connectivity 15:</p> <ul style="list-style-type: none"> ▪ hRPS ▪ PCX\$SERVER (DECnet)
Legacy extensions in Exceed and Xconfig	<p>The following X Protocol extensions have been removed:</p> <ul style="list-style-type: none"> • EVI • TOG_CUP • XC-APPGROUP • XEVIE • XFree86-Misc • XC-APPGROUP
Legacy Xconfig options	<p>These legacy options have been removed:</p> <ul style="list-style-type: none"> • Other Server Settings / Performance <ul style="list-style-type: none"> ○ Enable OpenGL Backing Stores ○ Exact Zero-Width Lines ○ Expose Event on Color Change ○ SaveBits ○ Save Unders ○ Tuning (and Tune...) • X Server Protocol / Extensions / Render / Configure... <ul style="list-style-type: none"> ○ Hardware Acceleration • Display and Video / Video <ul style="list-style-type: none"> ○ Defer Changes ○ Pre-allocate System Colors In Default Colormap ○ Preserve System Colors • Display and Video / Screen 0 <ul style="list-style-type: none"> ○ Show Scroll Bars
Support for MinGW in Exceed XDK	<p>Exceed XDK no longer supports MinGW. Previously, users of Exceed XDK could build MinGW applications using the Exceed XDK environment.</p>

Item	Details
OpenText Setup Configuration Wizard (Sconfig) FIPS / non-FIPS option removed from setup.exe	In Version 14.x, both FIPS and non-FIPS DLLs were shipped. In this version, a single set of DLLs is shipped. The FIPS / non-FIPS option was removed from setup.exe.

10 Contact Information

OpenText Corporation
275 Frank Tompa Drive
Waterloo, Ontario
Canada, N2L 0A1

Support: <https://support.opentext.com>

Knowledge Center: <https://knowledge.opentext.com>

For more information, visit www.opentext.com